



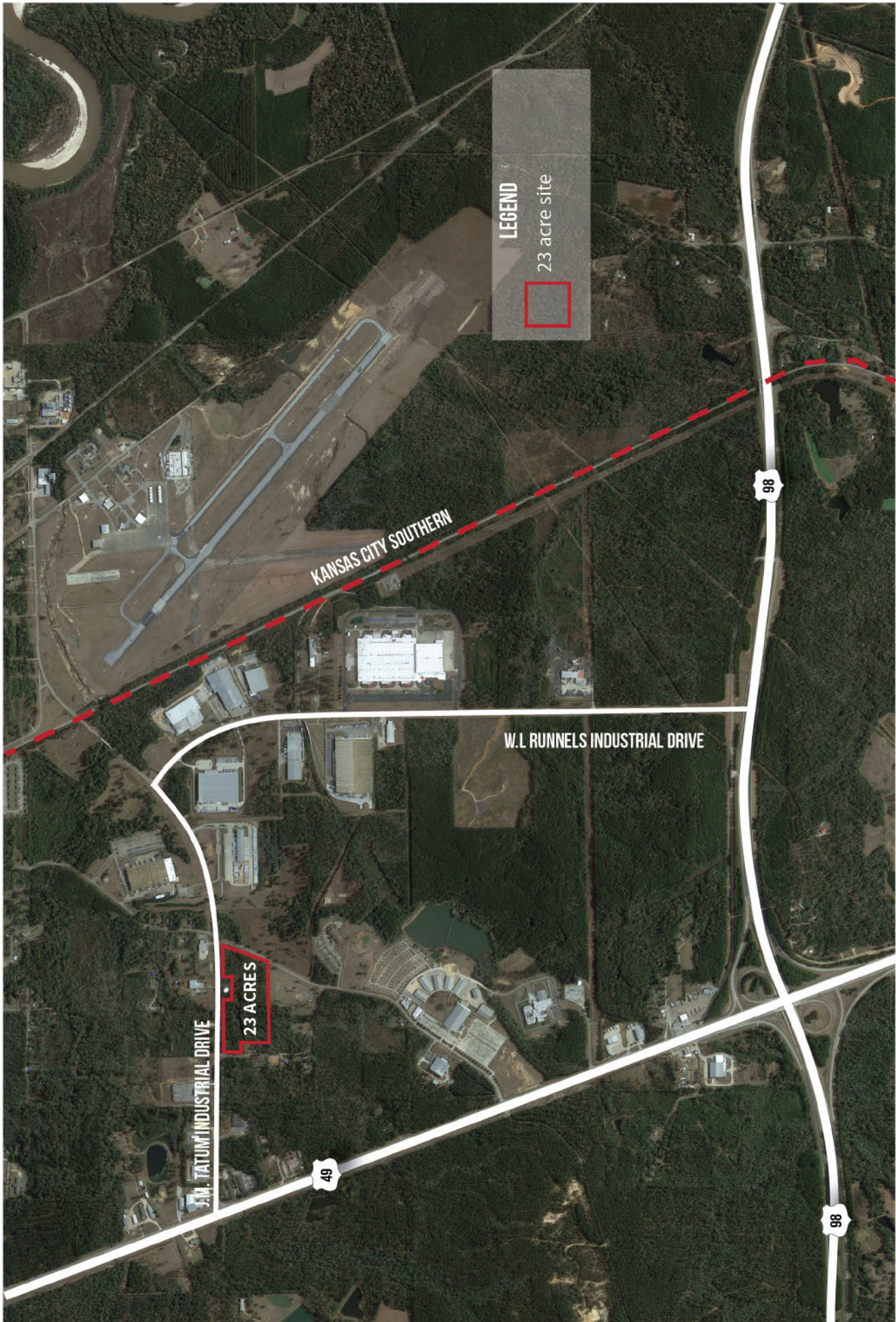
FORREST COUNTY INDUSTRIAL PARK

Greater Hattiesburg, MS



- **EXCEL INJECTION MOLDING**
 - Custom injection molded plastic parts, locally owned & operated, employs 50 people
- **BLENDCO INC.**
 - Dry-food blending and packaging, locally owned and operated, employs 20 people
- **ABILITY WORKS**
 - MS Dept of Rehabilitation Services program, vocational experience and job training
- **SADDLECREEK**
 - Sam's distribution center, 40 employees
- **KOHLER ENGINES**
 - Manufacture lawn care engines, 650 full-time employees
- **HATTIESBURG-BOBBY L. CHAIN MUNICIPAL AIRPORT (HBG)**
 - Built in 1930, the airport serves the region as a corporate and general aviation facility
- **USA YEAST**
 - Rare strain, high quality bakers cream yeast manufacturer, 30 employees
- **SOFIDEL AMERICA**
 - 6th largest paper manufacturing company in the world
 - Italian owned specialty paper company, \$120M investment, 250 employees
- **GREEN BAY CONVERTING**
 - Specialty paper converting, \$48M investment, 100 employees
- **JPM OF MISSISSIPPI**
 - Precision manufacturing of specialty ball bearing casings for use in the aerospace industry
 - 60 employees
- **WESTERN CONTAINER**
 - Plastic (PET) blow molding for Coca-Cola bottling products, 105 employees
- **HYBRID PLASTICS**
 - Nano-structure chemical manufacturing (POSS - dispersant), 25 employees
- **BERRY PLASTICS**
 - Plastics packaging products (bottle caps), 95 employees
- **SUPER STUD**
 - Extruded aluminum construction materials, 20 employees
- **SELECT PRODUCT GROUP (SPG)**
 - Paper product converting and packaging, 120 employees
- **WIS-PAK**
 - Pepsi products filling/packaging facility, 90 employees
- **MAR-JAC POULTRY**
 - Poultry processing, 1000 employees

**2,655 JOBS RIGHT
HERE IN SOUTHEAST
HATTIESBURG!**



FORREST COUNTY INDUSTRIAL PARK
GREAT HATTIESBURG
23-ACRE SITE

FORREST COUNTY INDUSTRIAL PARK

23-ACRE SITE

SPEC SHEET

LOGISTICS INFORMATION

Often referred to as the “Hub City”, due to its strategic location, Greater Hattiesburg has a vibrant culture, diverse economy, and a high quality of life that provides a world of opportunity. Centrally located between Jackson, MS, Gulfport/Biloxi, MS, New Orleans, LA and Mobile, AL, Greater Hattiesburg is positioned with direct interstate connections and highway routes, three Class I railroads, and access to 5 Gulf of Mexico ports.

Nearest Interstate:

- U.S Interstate 59 - 4 miles (6 KM)

Nearest 4-Lane Highway:

- U.S Highway 49 - <1 mile (2 KM)

Nearest Commercial Airport:

- Hattiesburg-Laurel Regional Airport - 22 miles (35 KM)

Nearest Deepwater Port:

- Port of Gulfport - 65 miles (105 KM)

Site Characteristics:

- Total Acreage - 23 acres
- Ownership - Forrest County Industrial Park Commission
- Zoning - Industrial
- 100 Year Floodplain - No
- Topography - Gently Rolling
- Covenants - Yes
- Phase 1 Environmental - Yes
- Wetland Delineation - Yes
- Cultural Resource Study - Yes
- Threatened Endangered Species - Yes
- Geotechnical Review - No

Utilities:

- Electric Distribution - Pearl River Valley Electrical Authority
- Natural Gas - Spire
- Water - City of Hattiesburg
- Sewer - City of Hattiesburg
- Telecommunications - AT&T



FORREST COUNTY INDUSTRIAL PARK
GREAT HATTIESBURG
34-ACRE SITE

FORREST COUNTY INDUSTRIAL PARK

34-ACRE SITE

SPEC SHEET

LOGISTICS INFORMATION

Often referred to as the “Hub City”, due to its strategic location, Greater Hattiesburg has a vibrant culture, diverse economy, and a high quality of life that provides a world of opportunity. Centrally located between Jackson, MS, Gulfport/Biloxi, MS, New Orleans, LA and Mobile, AL, Greater Hattiesburg is positioned with direct interstate connections and highway routes, three Class I railroads, and access to 5 Gulf of Mexico Ports.

Nearest Interstate:

- U.S Interstate 59 - 4.1 miles (7 KM)

Nearest 4-Lane Highway:

- U.S Highway 49 - <0.4 miles (<1 KM)

Nearest Commercial Airport:

- Hattiesburg-Laurel Regional Airport - 18.9 miles (30 KM)

Nearest Deepwater Port:

- Port of Gulfport - 65 miles (105 KM)

Site Characteristics:

- Total Acreage - 34 acres
- Ownership - Forrest County Industrial Park Commission
- Zoning - Industrial
- 100 Year Floodplain - No
- Topography - Gently Rolling
- Covenants - Yes
- Phase 1 Environmental - Yes

Utilities:

- Electric Distribution - Pearl River Valley Electrical Authority
- Natural Gas - Spire
- Water - City of Hattiesburg
- Sewer - City of Hattiesburg
- Telecommunications - AT&T