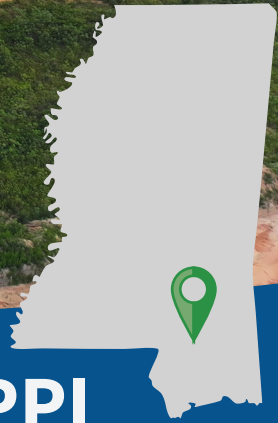




# I-59 SUPPLY CHAIN PARK

MISSISSIPPI



## GREATER HATTIESBURG, MISSISSIPPI



Scan here to watch a 60-second video on the I-59 Supply Chain Site!



# GREATER HATTIESBURG AT A GLANCE

Greater Hattiesburg is home to a vibrant culture, diverse economy, high quality of life and a world of opportunity. Covering a four county area in South Mississippi, the Hattiesburg Metropolitan Statistical Area encompasses Forrest, Lamar, Covington and Perry Counties, with a population of over 173,000. Nicknamed the Hub City, Hattiesburg is centrally located between Jackson, MS, Gulfport/Biloxi, MS, New Orleans, LA and Mobile, AL, offering a mix of big city advantages and small town charm.

With over 26,000 college students in a 30-mile radius, Greater Hattiesburg has a highly educated populace and a superb quality of life. Our region is home to The University of Southern Mississippi, William Carey University, Pearl River Community College, and Jones College. Pearl River and Jones, our two-year community colleges would join forces to craft a tailored training program to meet Amazon's workforce recruiting, screening, and training needs.

In recent years, \$400M in solar energy development has come on-line in the region supplying approximately 250MW of clean energy to the local electrical grid. Distribution, manufacturing, back office, and headquarters projects have all located here in recent years. FedEx Ground is now under construction with a \$20 million, 200,000 sq. ft. distribution center in the I-59 Supply Chain Park and will employ 200.

Greater Hattiesburg is a vibrant region that embraces international diversity as evidenced by USM being home to students and faculty from 73 countries and William Carey University's student base representing 45 countries. USM is one of only 34 universities nationwide accredited in all four areas of the arts. Greater Hattiesburg is home to major college sports, a 40+ mile biking, jogging, and equestrian trail called The Longleaf Trace, Mississippi's premier zoo, nationally recognized restaurants and pubs, lakefront housing, and is within an easy drive of the beautiful Gulf of Mexico beaches and less than two hours from New Orleans, LA.

## CONTACT US



**CHAD NEWELL**

President

601-296-7513

[c.newell@theadp.com](mailto:c.newell@theadp.com)



**TODD JACKSON**

Executive Vice President

601-296-7509

[t.jackson@theadp.com](mailto:t.jackson@theadp.com)



**ADAM SCHRAEDER**

Economic Development  
Director

601-296-7510

[a.schraeder@theadp.com](mailto:a.schraeder@theadp.com)

# GREATER HATTIESBURG, MISSISSIPPI

OVER:

# 700,000

RESIDENTS WITHIN 60-MILES  
(ESRI 2022)

2022 AVG COST OF LIVING:

# 88.2%

OF NATIONAL AVERAGE  
(C2ER/COLI 2021)

12 MONTH MOVING AVG  
UNEMPLOYMENT RATE

# 3.6%

STATE RATE: 4.0 %  
U.S. RATE: 3.8%

(MDES JUNE 2023)



# 13.4%

INCREASE IN HOME  
SALES FROM  
2018-2022

(HAAR 2018 - 2022)

NEW JOBS TRACKED IN LAST FIVE  
YEARS:

OVER

# 3,336

(ADP 2018-2022)

# 2 OF THE TOP 10

BEST PUBLIC HIGH  
SCHOOLS IN MS

(U.S. News & World Report 2022)

# #3

CITY OF  
HATTIESBURG RANKS  
IN THE STATE IN  
RETAIL SALES  
(MDOR FY 2022)

HATTIESBURG MS RANKS

# #2

IN THE NATION  
FOR JOB GROWTH  
% DURING THE  
PANDEMIC

# TOP 11

CITIES TO SEE PUBLIC ART  
IN THE WORLD

(TRAVEL & LEISURE MAGAZINE)

# 2.9%

INCREASE FROM FEB  
2020 TO NOV 2020

(247wallst.com)

CAPITAL  
INVESTMENT  
IN THE LAST  
FIVE YEARS:

# \$1.20B

(ADP 2018-2022)

# \$400M

INVESTMENT IN GREEN  
ENERGY

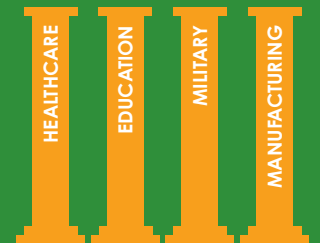
# 2,500 ACRES

OF SOLAR DEVELOPMENT

# 250 MW

ON THE GRID OR IN  
DEVELOPMENT

# DIVERSE ECONOMY



MSA  
ANNUAL  
RETAIL  
SALES:

OVER  

# \$2.25B

(MDOR FY 2022)



AREA DEVELOPMENT PARTNERSHIP  
GREATER HATTIESBURG MS

AREA DEVELOPMENT PARTNERSHIP 601.296.7500 | WWW.THEADP.COM

# Live. Work. Play

## THE HATTIESBURG WAY

Quality of life in Greater Hattiesburg



### LIVE

- Numerous **executive** housing options
- Cost of Living **15% below** national average
- **2 of the Top 10** School Districts in the State
- **Vibrant** music scene
- Healthcare **hub**
- Recognized by Travel & Leisure Magazine as one of the **top 11 places** to see public art **in the world.**

### PLAY

- **40+ mile** biking, jogging, and equestrian trail called the Longleaf Trace
- **4** championship **golf courses**
- **Division 1** college sporting events
- Short drive to **canoeing, kayaking, camping and hiking**
- **USM Orchestra and Symphony**

### SHOP & EAT

- Booming retail market with **over \$2.18B** in retail sales per year
- Local hometown brewery **Southern Prohibition**
- Multiple **local boutiques** and **national retailer** options
- **Midtown Hattiesburg** - a mix of restaurants shops and Hattiesburg's own **Hotel Indigo**, the only one in the state.

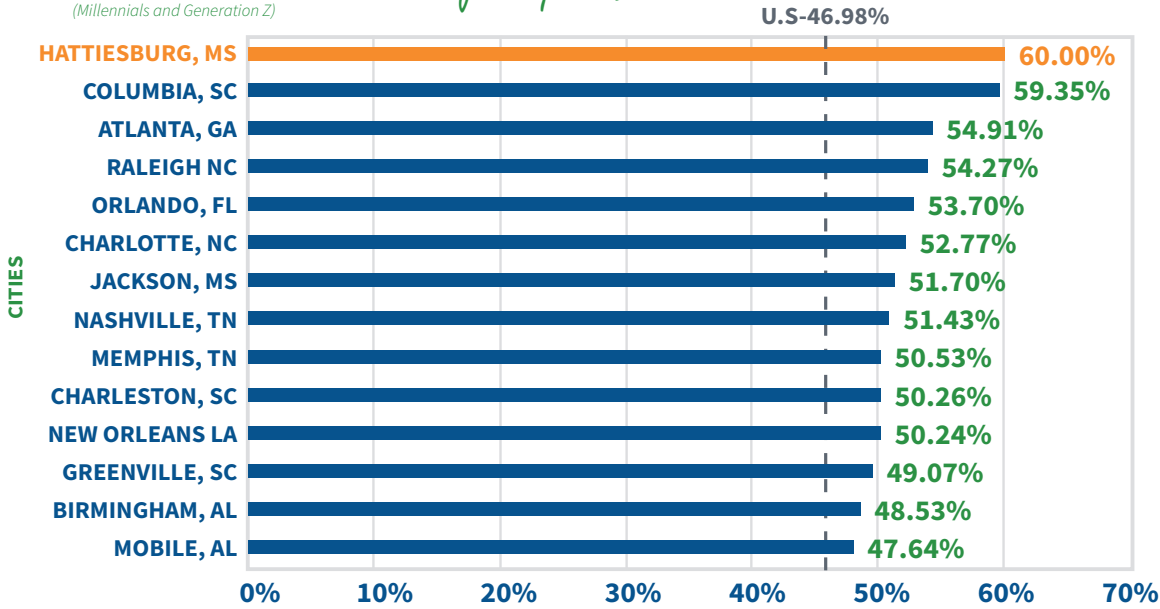
# Growth at a GLANCE

**GREATER HATTIESBURG** pulls in a population **OVER 700,000** within a 60-mile radius.



## YOUNG TALENT as % of Population

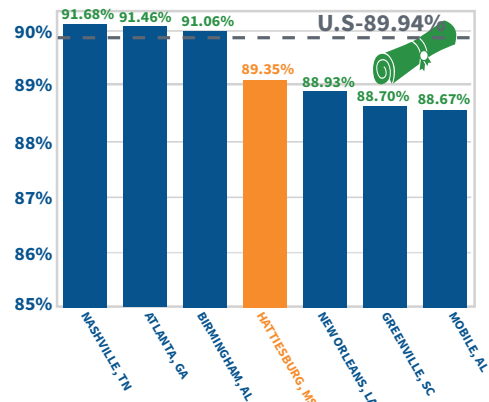
(Millennials and Generation Z)



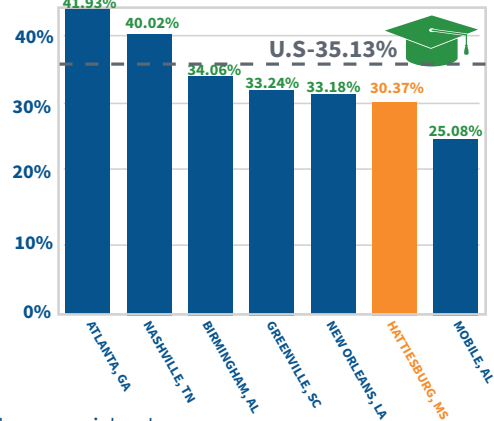
▶ The City of Hattiesburg has the **HIGHEST PERCENTAGE** of **YOUNG TALENT** compared to other major cities in the South.

## EDUCATIONAL Attainment

### AGE 25+ HIGH SCHOOL DIPLOMA OR HIGHER



### AGE 25+ BACHELOR'S DEGREE OR HIGHER

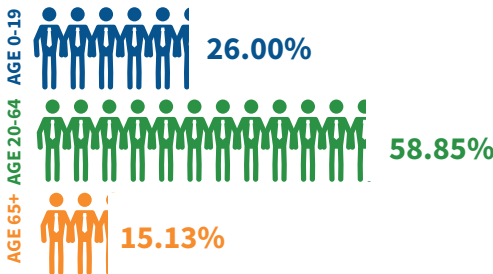



89.35% of Greater Hattiesburg residents age 25 or older hold at least a **HIGH SCHOOL DIPLOMA** while **28.74%** of residents age 25 or older hold a **BACHELOR'S DEGREE OR HIGHER**.

## ECONOMIC Indicators

  
**\$75,048**  
 Average Household Income

### AGE DISTRIBUTION



  
 Greater Hattiesburg has a **MEDIAN AGE** of **35.3**





# SOLAR STRONG

GREATER HATTIESBURG  
A SOLAR HUB OF THE GULF SOUTH



# 250

MEGAWATTS ON  
THE GRID OR IN  
DEVELOPMENT



# \$400M

INVESTMENT



# 2500

ACRES OF SOLAR PANELS

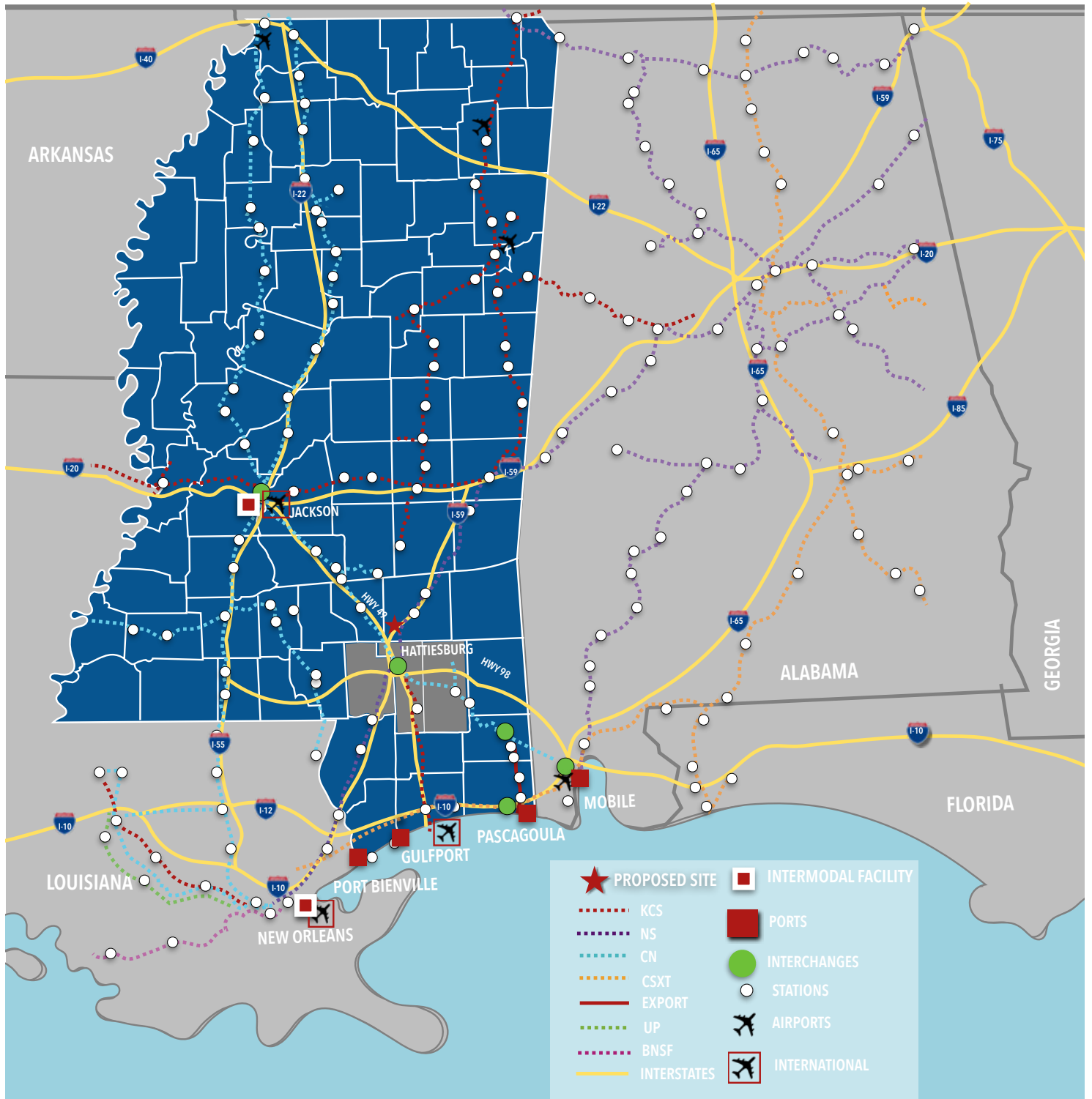


ENOUGH ENERGY TO POWER OVER  
**40,000 HOMES**



# INTERMODAL MAP

## GREATER HATTIESBURG AREA



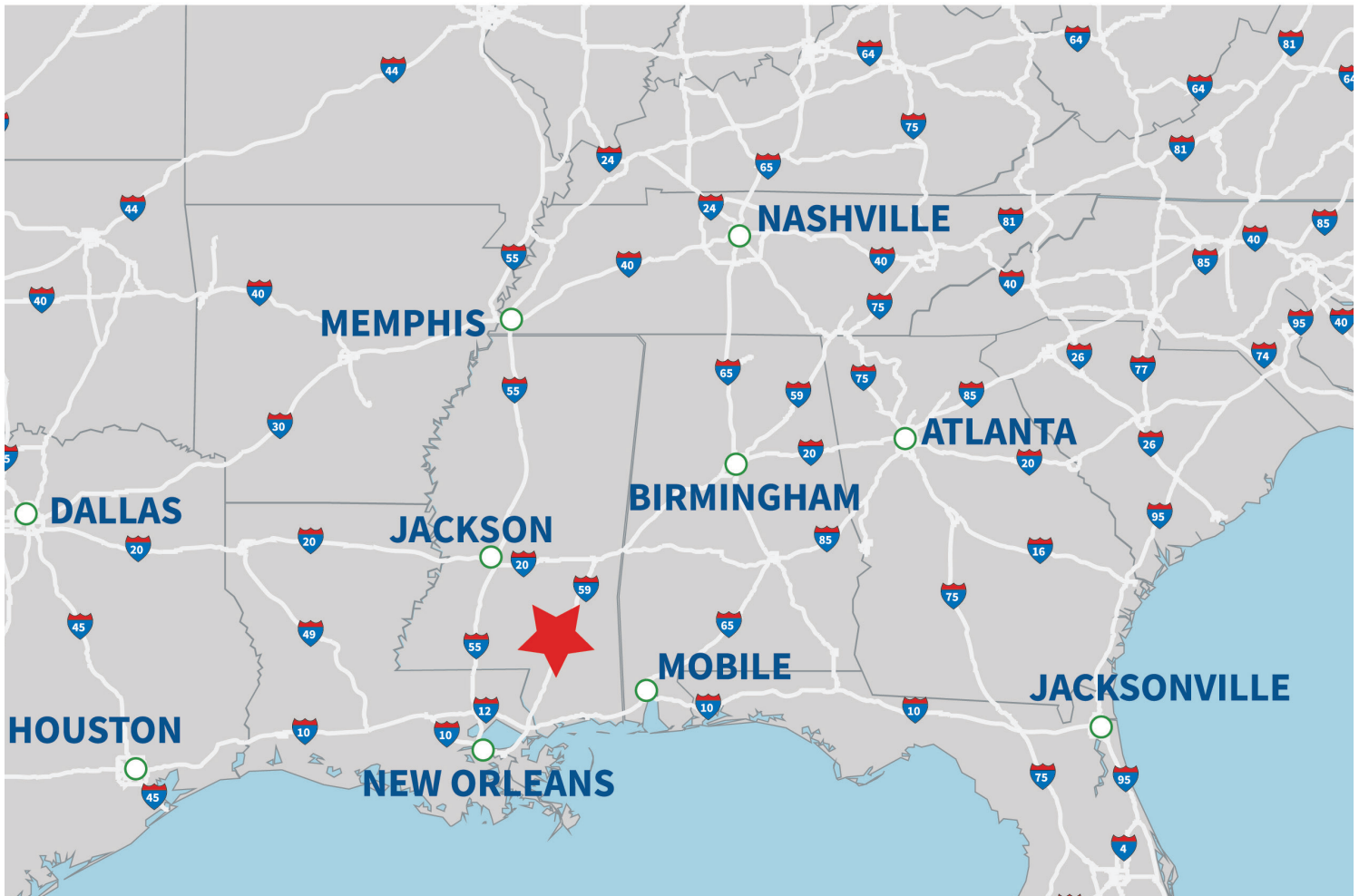
AREA DEVELOPMENT PARTNERSHIP  
GREATER HATTIESBURG MS

40 MILES

# REGIONAL CONNECTIVITY

## GREATER HATTIESBURG

### REGIONAL INTERSTATE CONNECTIONS



#### DISTANCE FROM I-59 SUPPLY CHAIN PARK TO SURROUNDING CITIES

CITY	DISTANCE	TIME
Gulfport/Biloxi, MS	82 miles	1 hr 22 min
New Orleans, LA	122 miles	1 hr 47 min
Pensacola, FL	168 miles	2 hr 52 min
Baton Rouge, LA	178 miles	2 hr 34 min
Birmingham, AL	222 miles	3 hr 19 min
Memphis, TN	295 miles	4 hr 31 min
Atlanta, GA	367 miles	5 hr 23 min
Nashville, TN	411 miles	5 hr 59 min
Houston, TX	445 miles	6 hr 29 min
Dallas, TX	489 miles	7 hr 31 min



AREA DEVELOPMENT PARTNERSHIP  
GREATER HATTIESBURG MS



# HUB CITY

## Transportation Talent



Looking for a location where top talent wants to work and live?

**IT'S GREATER HATTIESBURG!**



Average hourly wage for Transportation, Distribution and Logistics within 60-miles of the site is **\$19.71**  
(JobsEQ)



The University of Southern Mississippi's **Center for Logistics, Trade and Transportation** can provide custom training on transportation systems evaluation, infrastructure security and hazards and VR training and simulation.



Over **6,360** residents within 60-miles of the site are currently employed in Transportation and Warehousing  
(JobsEQ)



Hattiesburg MSA ranked **#2** in the nation for job growth percentage from Feb 2020 to Nov 2020



**88.8%** of residents within 60-miles of the site hold high school diploma or higher



Hattiesburg's private sector has a union membership rate of only **3.9%**  
JobsEQ



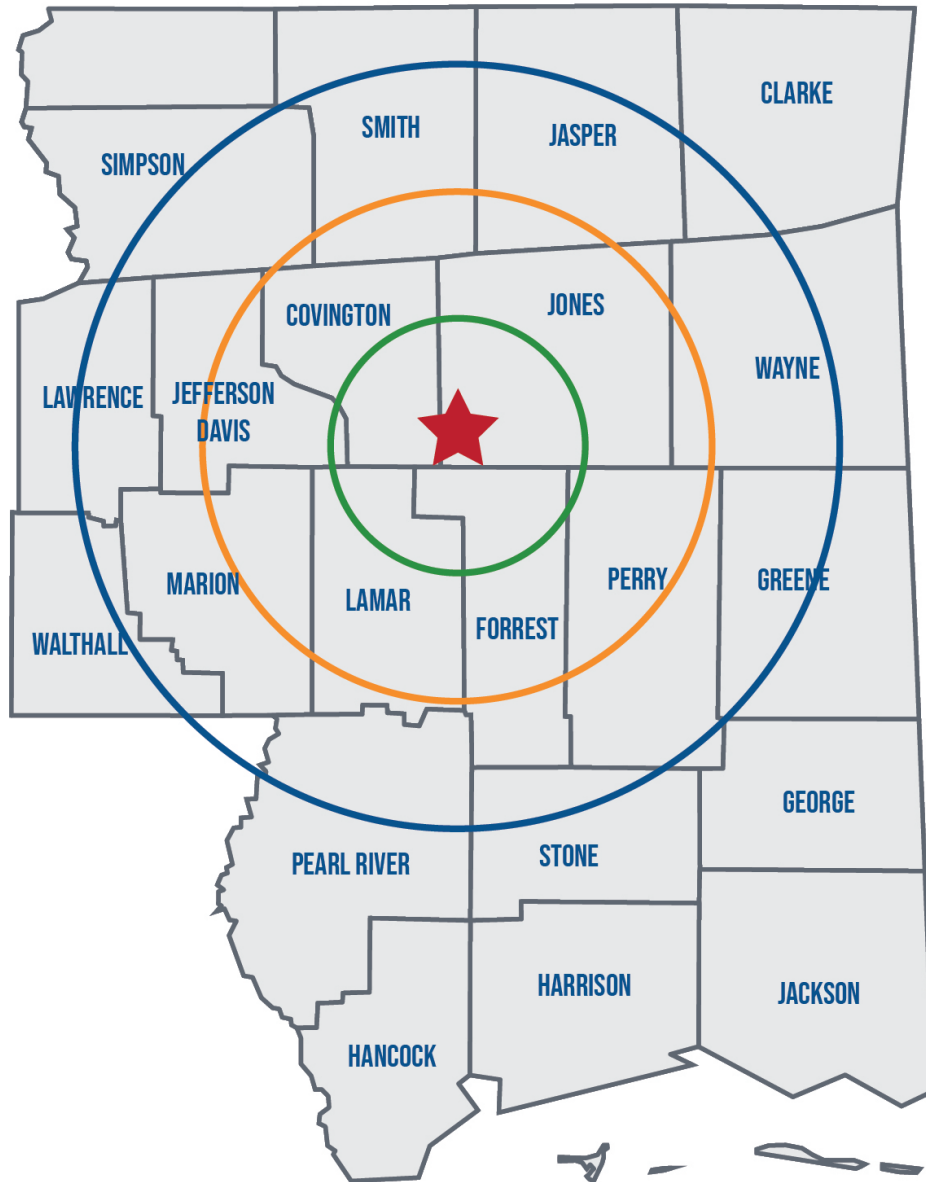
Both **Pearl River Community College** and **Jones College** have multiple programs related to Advanced Transportation and Warehousing including commercial truck driving, electronics technology, forklift certification, warehouse simulation, instrumentation and distribution and logistics. The local community colleges can add emphasis to current CTE programs **designed to provide the student with the basic skills needed to be successful in a high-performance distribution facility.**



# POPULATION RADIUS RING MAP

## I-59 SUPPLY CHAIN PARK

RADIUS: 15, 30, & 45-MILES



**★ I-59 SUPPLY CHAIN PARK**

**15 MILES - 127,607**

**30 MILES - 247,120**

**45 MILES - 259,067**

*(Community Analyst 2021)*

# LABOR FORCE MAP

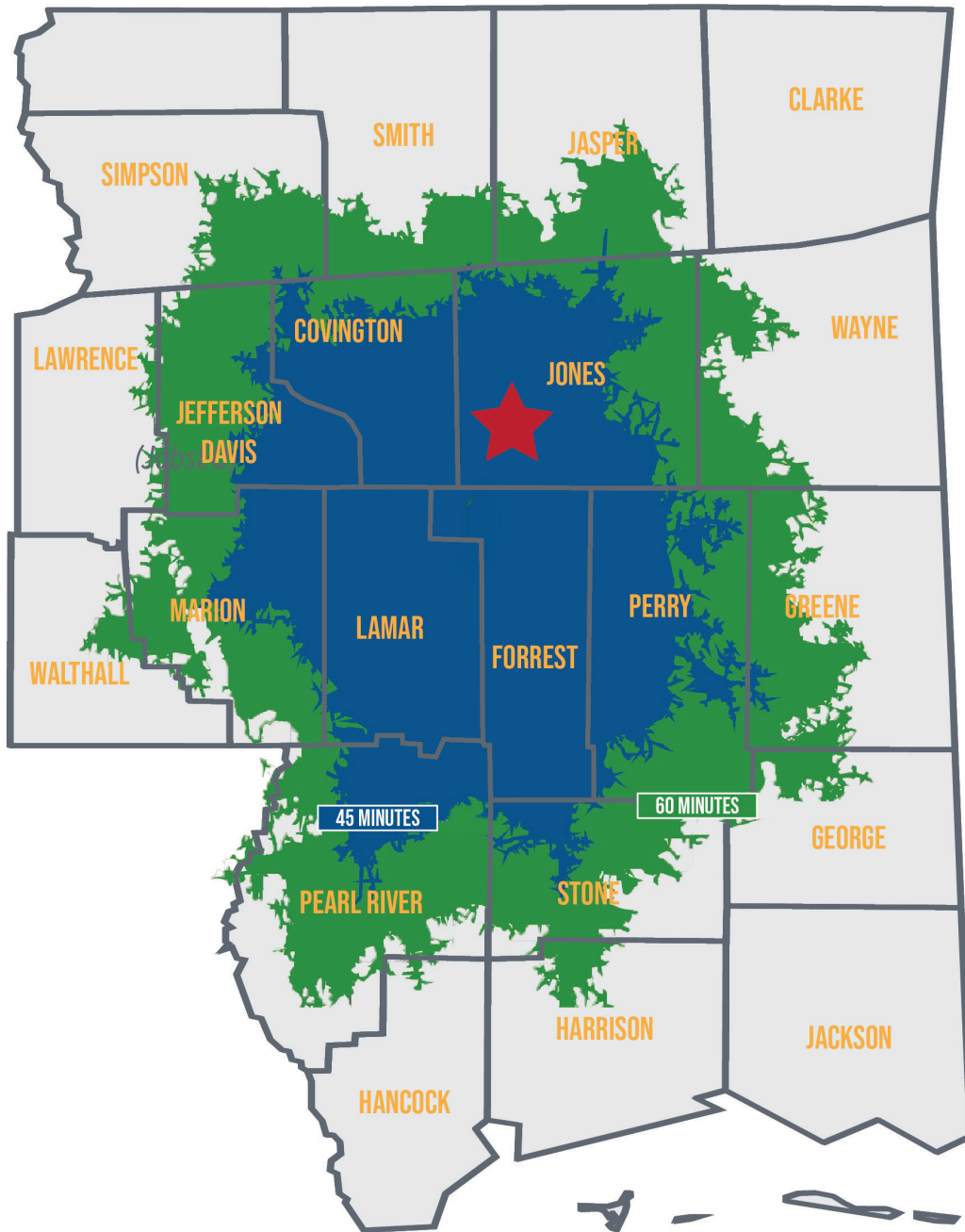
## I-59 SUPPLY CHAIN PARK

DRIVE TIME: 45, & 60 MINUTES

LABOR FORCE: AGE 16+ Civilian Population



**I-59** SUPPLY CHAIN PARK  
MISSISSIPPI



 **I-59 SUPPLY CHAIN PARK**

 **45 MINUTE - 106,954**

 **60 MINUTE - 222,315**

(JobsEQ 2022)




AREA DEVELOPMENT PARTNERSHIP  
GREATER HATTIESBURG MS

601-296-7500 | [WWW.THEADP.COM](http://WWW.THEADP.COM)





# INDUSTRY LABOR FORCE COMMUTING MAP

## GREATER HATTIESBURG, MS

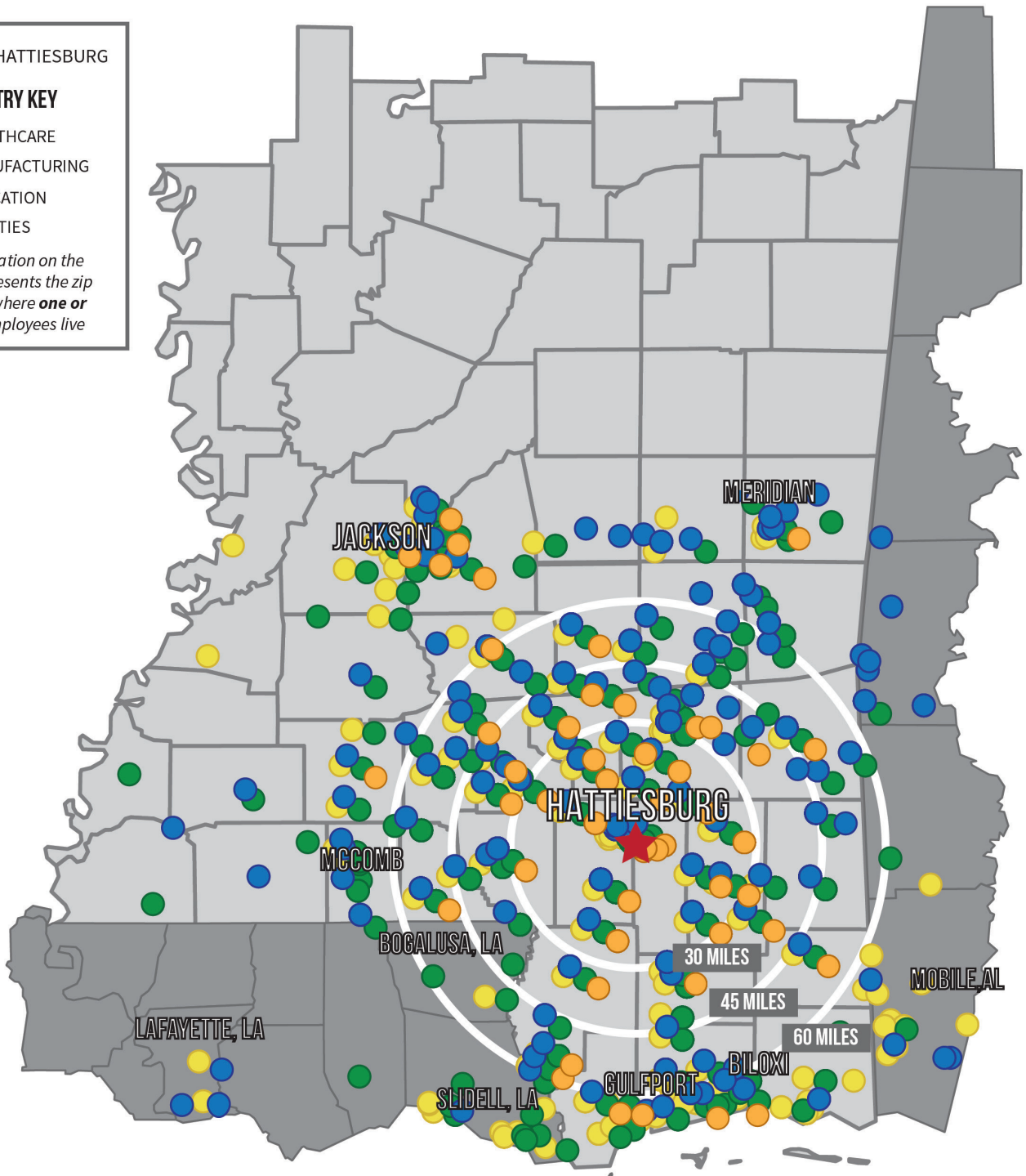
### EMPLOYEE ZIP CODES

 HATTIESBURG

**INDUSTRY KEY**

-  HEALTHCARE
-  MANUFACTURING
-  EDUCATION
-  UTILITIES

*Each location on the map represents the zip code of where **one or more** employees live*



# K-12 Education Initiatives



- 8th & 9th Graders
- All Hattiesburg MSA Schools
- Over 1,000 students
- 50+ exhibitors - Interactive career fair

Mission:

**POSSIBLE**

- 11th Graders
- All Hattiesburg MSA Schools
- Almost 500 students
- USM & William Carey
- Soft skills training

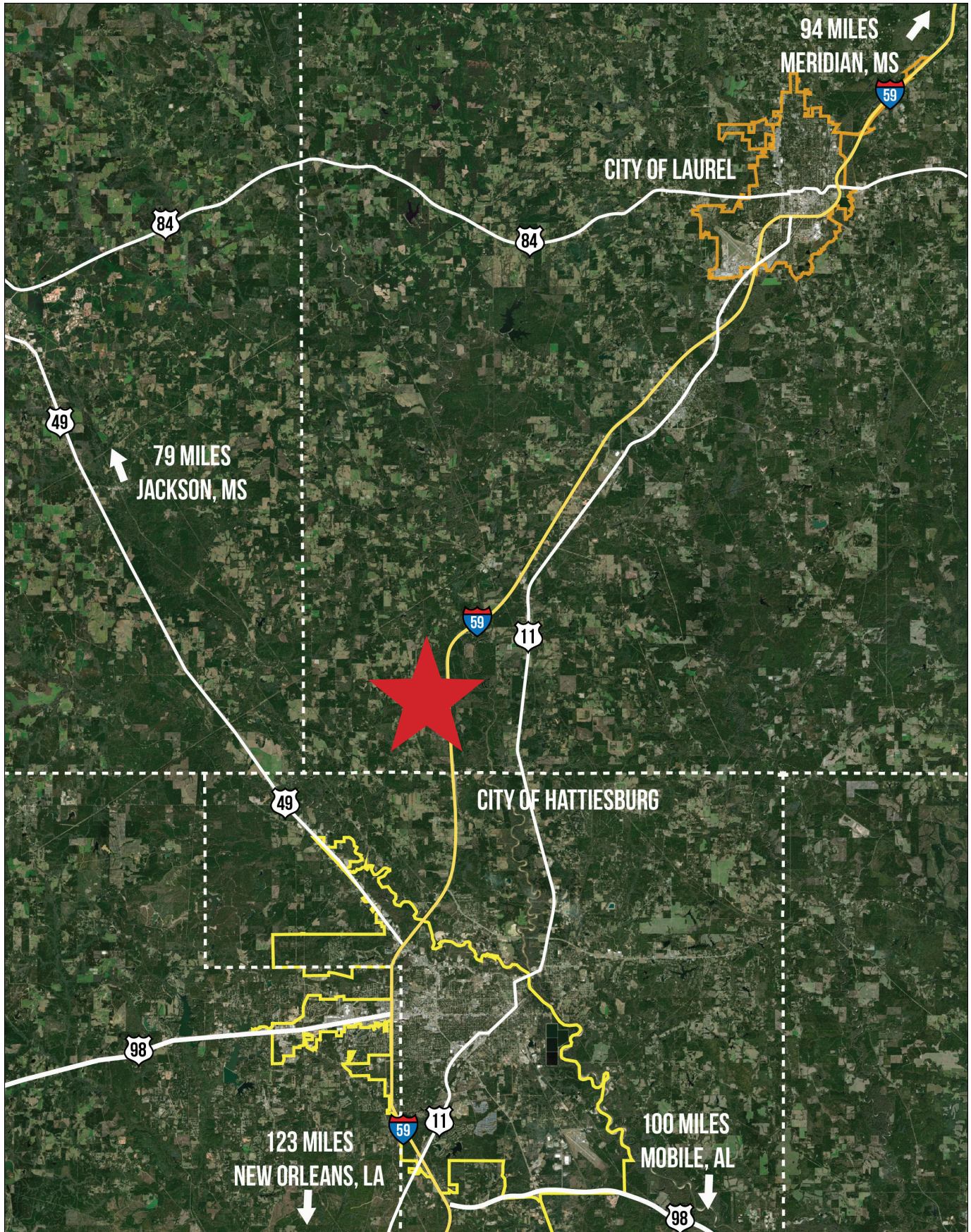


- Educator continuing education
- All Hattiesburg MSA Schools
- 28 teachers
- Rotating industry tours

# I-59 SUPPLY CHAIN PARK

FORREST & JONES COUNTY

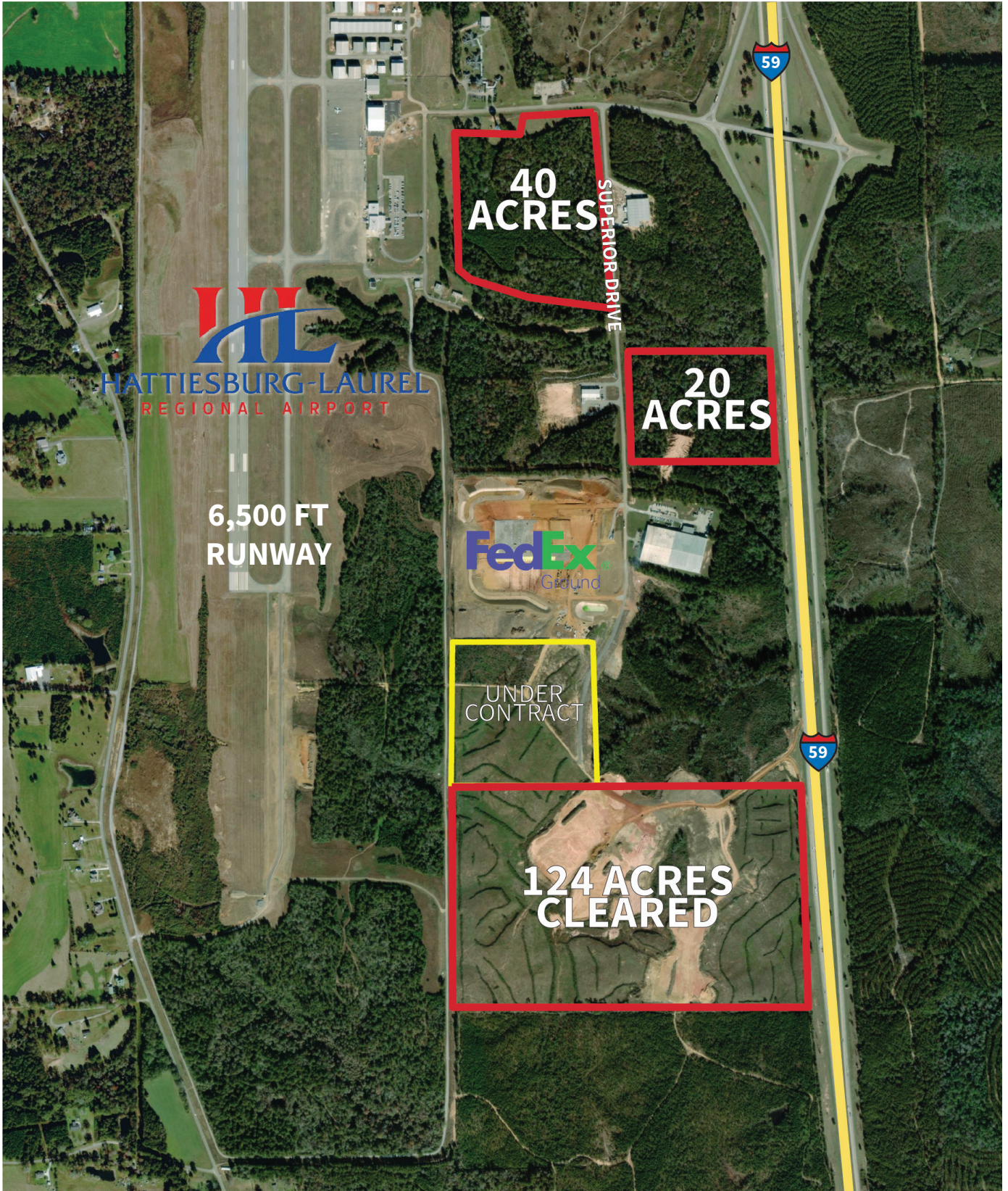
Regional Map



# I-59 SUPPLY CHAIN PARK

## FORREST & JONES COUNTY

Site Map



# I-59 SUPPLY CHAIN PARK

FORREST & JONES COUNTY

124-Acre Site



I-59 SUPPLY CHAIN PARK  
MISSISSIPPI



124 ACRES  
CLEARED

35 ACRE  
PAD

A **\$3.4M** grant has been awarded to upgraded sanitary sewer capacity, extend water and sewer to the 124-acre site, grade a pad for viewing and explore secondary access road options.



124 ACRES  
CLEARED



# I-59 SUPPLY CHAIN PARK

FORREST & JONES COUNTY

*Recent Investment*



**I-59** SUPPLY  
CHAIN  
MISSISSIPPI PARK



**\$20M INVESTMENT**  
**217,000 SQ.FT. FACILITY**  
**200 JOBS**



**NEW FBO FACILITY**  
**UNDR CONSTRUCTION**

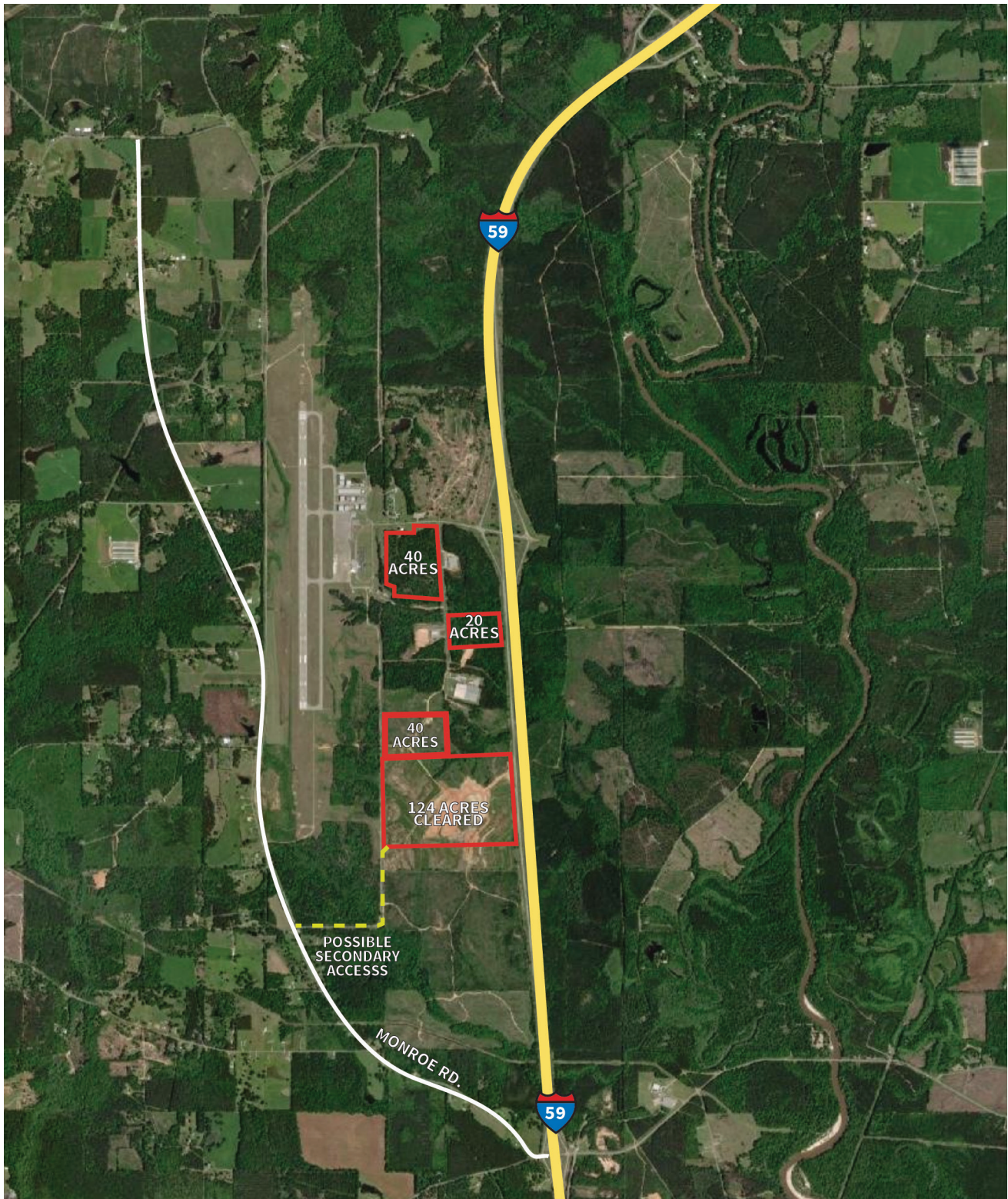
# I-59 SUPPLY CHAIN PARK

FORREST & JONES COUNTY

Potential Secondary Access to Premiere Site



I-59 SUPPLY CHAIN PARK  
MISSISSIPPI



\*Secondary access road has not been fully conceptualized or right of way (ROW) acquired and additional entry points could differ from the above map.



**I-59** SUPPLY  
CHAIN  
MISSISSIPPI PARK

[www.theadp.com/I59SupplyChain](http://www.theadp.com/I59SupplyChain)

